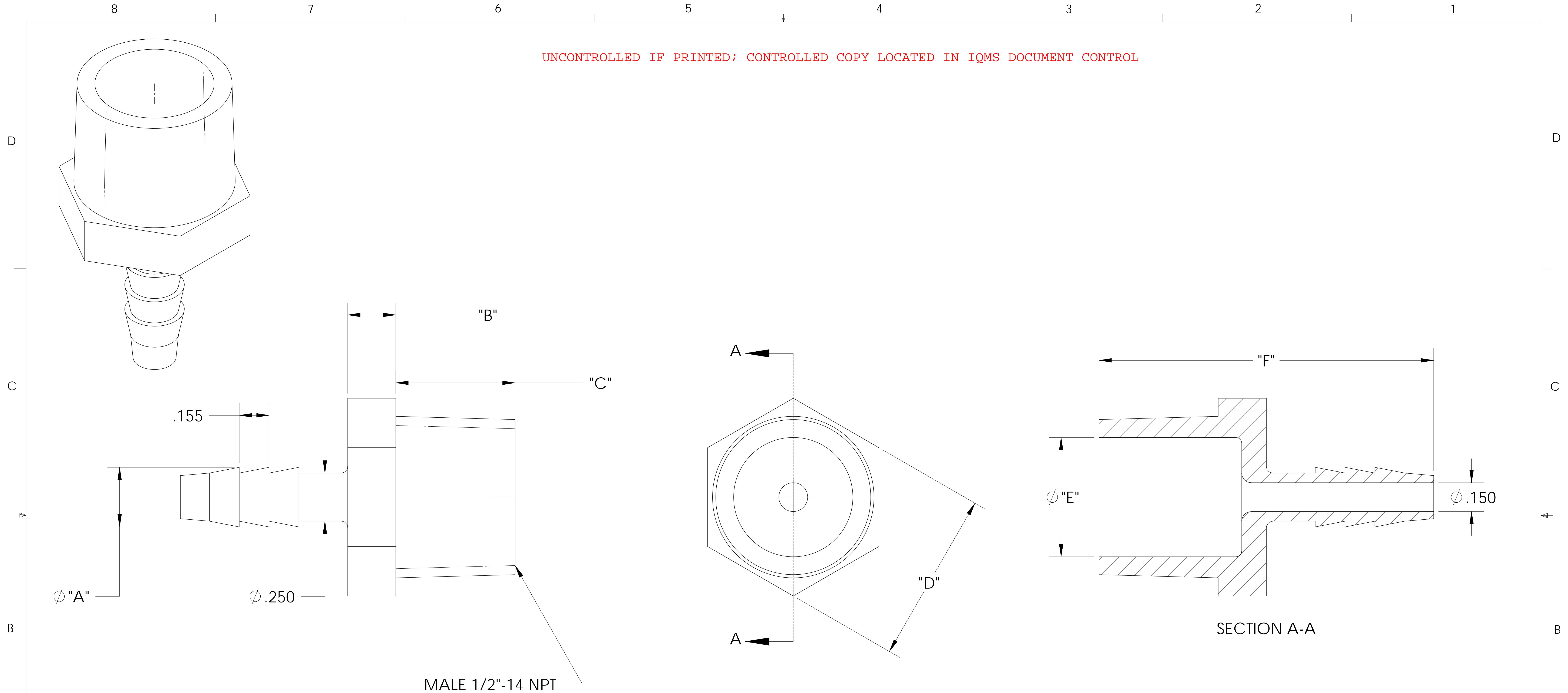


UNCONTROLLED IF PRINTED; CONTROLLED COPY LOCATED IN IQMS DOCUMENT CONTROL



CATALOG NO.	DESCRIPTION	MATERIAL	DIM "A"	DIM "B"	DIM "C"	DIM "D"	DIM "E"	DIM "F"
TA1084/PP	1/2" NPT X 1/4" PP	POLYPROPYLENE	.305	.255	.60	.88	.615	1.72
TA1084/P	1/2" NPT X 1/4" P	POLYETHYLENE	.305	.250	.60	.87	.605	1.69
TA1084/N	1/2" NPT X 1/4" N	NYLON	.310	.250	.62	.89	.620	1.74

SHOWN

NOTES:

- 1) POLYPROPYLENE HAS COLOR OPTIONS:  
 BLACK = TA1084/PPB  
 NATURAL = TA1084/PPN

**PROPRIETARY AND CONFIDENTIAL**  
 THE INFORMATION CONTAINED IN THIS DRAWING IS THE SOLE PROPERTY OF THOGUS PRODUCTS COMPANY. ANY REPRODUCTION IN PART OR AS A WHOLE WITHOUT THE WRITTEN PERMISSION OF THOGUS PRODUCTS COMPANY IS PROHIBITED.

D	95.00072	CONVERTED TO 3D FORMAT	UNLESS OTHERWISE SPECIFIED: DIMENSIONS ARE IN INCHES TOLERANCES: ANGULAR: ±0.5° XX = ± 0.1 X.XX = ± 0.05 X.XXX = ± 0.015 REMOVE ALL SHARP EDGES AND BURRS BLEND ALL RADII TO 0.01IN INTERPRET GEOMETRIC TOLERANCING PER: ANSI Y 14.5 1994 MATERIAL: PP, P, N FINISH: NA THIRD ANGLE PROJECTION:	NAME	DATE	 33490 PIN OAK, AVON LAKE, OH 44012 TITLE: <b>1/2" NPT X 1/4" BARB ADAPTER</b>	
				DRAWN	JRM		03/16/11
				CHECKED	KDJ		03/16/11
				ENG APPR.	JM		03/16/11
				MFG APPR.	ML		03/17/11
			Q.A.	NJW	03/17/11	SIZE <b>B</b> DWG. NO. TA1084 REV <b>D</b>	
REV	WRO#	DESCRIPTION	COMMENTS:				SCALE: 2:1
HISTORY			DO NOT SCALE DRAWING				MASS: SHEET 1 OF 1